

Attributes Bär Marinelift



Security

Control

In general the Marinelift is switched on and off in the cockpit. When the lift is switched on, the engine cannot be started and an optical or acoustical signal occurs.

The Marinelift is operated conveniently by the waterproof radio remote control. For normal Marinelift operations, a 4 channel model is included. For additional features driven by the Marinelift unit, like the garage door, tender boat recovery function, etc., a 8 channel model is available.

In order to activate the radio remote control, you have to push the Start-Button first and afterwards the desired buttons.

As the radio remote control needs a relatively large range when recovering the tender boat from the tender, undesired misuse can occur.

The lifting and retracting the platform to the docking position represents a crushing and sheering risk for passengers.

To avoid these dangers all functions stop automatically in a defined safe position. In order to reach the docking position the Safety-Button has to be pushed. Now the operator knows that he runs into the danger zone and must therefore take extra precaution.

If the system is equipped with a duo unit (series for BM 12-1200.../ accessory for BM 6-700...), the control switches automatically into the slow mode before the stop. From this stop to the final docking position there is just the slow mode available.

A remote control with cable is planned as a second control unit (special accessory). It works the same way as the radio remote control.

Furthermore a touchscreen can be chosen as additional control unit beginning with the BM 6-700 (special accessory). The user finds the same buttons on the touchscreen as on the radio remote control. Conform to the radio remote control there is a Safety-Button. In addition the position of the lift is shown on the screen.



Furthermore the user finds an additional service page on the touchscreen. Here he sees the condition of the double relays.

If desired, a logo or emblem may also be inserted as special accessory. Further non-Marinelift functions (e.g. garage door) are shown on a separate site on the display.

Double relay for e-engine

Direct current drives with a 12 or 24 volt are supplied by one battery these are threatened by power sags in case of depleted batteries (e.g. after the winter break).

The power sag needs more electricity (A) that produces a stronger electric arc. This leads in most cases to a damage of the contacts. Depending on the intensity and the frequency it may even lead to a melting of the contacts. This can just occur at later stages or even under normal tension.

As a result, the motor is running until it is actively put out of service by the main switch. Otherwise, it burns out after a short period.

Unpleasant if this happens far away from the marina and the lift is not ready. Very unpleasant if you have to use the manual pump without the knowledge of how to use it or without hand pump!

This is why all Bär Marinelifts are equipped with a series-wound double relay. One relay always switches out of service. The second relay switches with a time lag. It is the actual functional relay. This eliminates any possible damage by power sags. A motor burn is excluded.

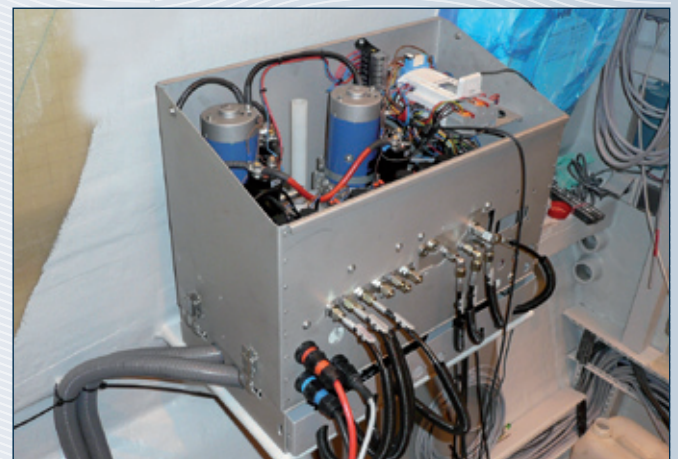
If the power relay melts, this is displayed in the cockpit and a repair can take place.

Duo unit

For even more safety the duo unit has been created – as your yacht also disposes of two independent drives. It has two independent drives. Each engine is switched by a double relay – four times more safety.

Bär Marinelifts with a duo unit always have two speeds. Every movement of the platform starts with one motor (slow mode) and switches after 20 to 30 cm to the second motor automatically (fast mode). In the same distance, the control unit switches automatically into the slow mode before reaching the corresponding end position.

This is Bär Marinelift convenience!



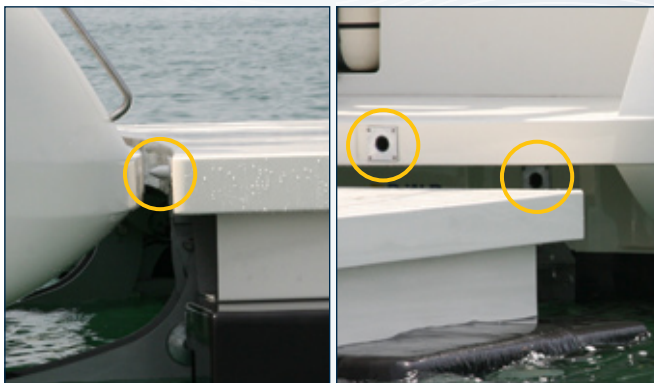
The duo unit is standard for the BM 12-1200..., but accessory for the BC 6- 700....

Protection against unauthorized lowering

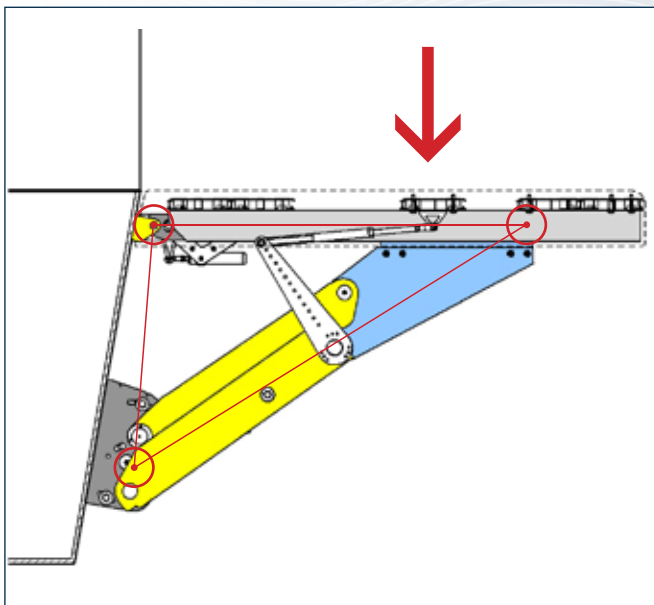
All Bär Marinelifts have an electrically unlockable check valve integrated in the lifting cylinder. It locks the lifting cylinder automatically in case of non use and protects against unauthorized lowering. Of course, it also works in case of hose rupture.

The Marinelift system StandardPlus (SP) offers additional mechanical protection of the platform at the yacht hull for the models BM 3- 400SP and BM 6- 700SP.

The Marinelift system SliderParty (SLP) has both in the cruising and party position an additional pin lock for the platform on the yacht.



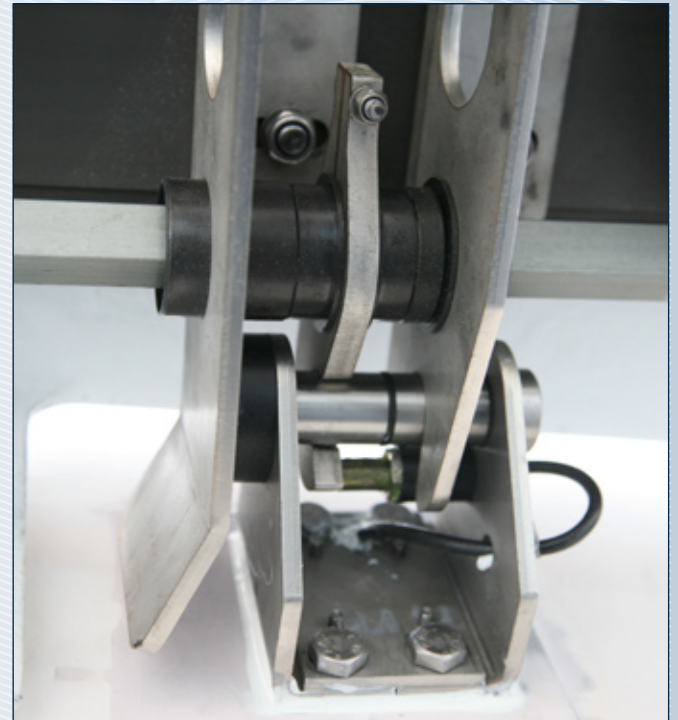
The Marinelift StandardPlus (SP) BM 12-1200SP has as standard a security lock on all axes at the yacht hull pursuant to the hydraulic-mechanical principle. It is - once locked - can only be released actively by the control unit.



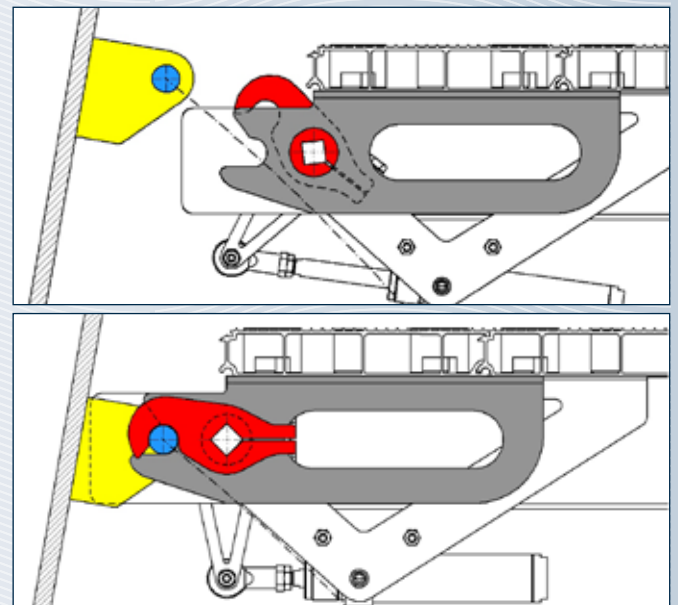
Lifting mechanism, platform and security lock form a stable triangle of force.

For the BM 6- 700S and SP this installation is selectable as special equipment.

The security lock as well as the pin lock assure a vibration-free platform during the cruise – even with a heavy tender.



Security lock - view from below.



Detail above: Security lock open.

Detail below: Security lock closed, self inhibitory.